

# ANDAMIRO<sup>®</sup> USA

## SPRING & SUMMER 2026 ARCADE EQUIPMENT CATALOG

Issued March 2026 by Andamiro USA | In effect through July 2026

Licensed & original brands you can bank on. Engineering you can trust.



Copyright 2026 Andamiro USA Corp. TM & © DreamWorks Animation, Lucasfilm Ltd., Marvel Studios, MLB Players Inc. and Viacom International Inc. All rights reserved.



Creating joy for all.

ANDAMIRO<sup>®</sup>

ANDAMIRO USA  
2222 Century Circle, Irving, TX 75062  
www.andamirousa.com  
Tel. (972) 445-9110

ANDAMIRO CO., LTD. (Headquarters)  
704 Ilsan Techno Town, 138, Ilsan-ro, Ilsandong-gu,  
Goyang-si, Gyeonggi-do, 40442 Korea  
Tel. +82-31-909-2121 | www.andamiro.com

# TABLE OF CONTENTS

Avengers Coin Pushers	.3
Basketball Pro	.4
Bobblehead Baseball VS (2-player)	.5
Crazy Toy (31" crane)	.6
Crazy Toy JR	.7
Dragons	.8
Krazy Ballz	.9
Marksman	.10
Nickelodeon Kart Racers Arcade	.11
Redeem Machine 2	.12
Spider-Man Coin Pusher 2P	.13
Spider-Man Coin Pusher 1P	.14
SpongeBob Pirates of Bikini Bottom	.15
SpongeBob Swish	.16
SpongeBob VR Bubble Coaster	.17
Ghost Coaster (SBVR expansion episode)	.18
STAR WARS Coin Pusher	.19
SuperStar 2 (prize merchandiser)	.20
Tic Tac Toe Basketball Challenge	.21
Ticket Coasters	.22
Guardians of the Galaxy	
SpongeBob Ticket Coaster	
Wacky Racer	.23
<b>MUSIC &amp; DANCE</b>	
Pump It Up LX feat. Phoenix	.24
Phoenix 2 Upgrade Guide	[TBA]
<hr/>	
Warranty Policy	.25

# AVENGERS 2P & 1P COIN PUSHERS

IN 4 MODEL VARIATIONS SINCE 2020



CARD & NON-CARD MODELS

**NEW**



Avengers Series 2 Cards

## FEATURES

- ▶ Available in four models:
  - With or without a card series featuring nine Avengers characters.
  - Options in 2- or 1-player cabinets.
- ▶ All models are ticket-redemption games.
- ▶ Inspired by the Infinity Stones storyline from Marvel Studios' "Avengers" movies.
- ▶ Players launch tokens at a moving target wheel to win tickets and rewards.
- ▶ Objective: push the Infinity Stones off the ledge to win big.
- ▶ Dropping a stone activates a Bonus Spin game for extra rewards.

## SPECS (dims / wt / usage)

### 2-PLAYER CABINET (card/non-card)

71" W. x 55" D. x 101" H.  
992 lbs. / shipping: 1,200 lbs.  
500W (5A)

### 1-PLAYER CABINET (card/non-card)

34" W. x 40" D. x 85" H.  
485 lbs. / shipping: 690 lbs.  
210W (1.7A)

© 2020 MARVEL Studios

# BASKETBALL PRO

**AN ARCADE SPORTS STAPLE SINCE 2019**

## FEATURES

- ▶ Pound-and-shoot controller is size of a real basketball.
- ▶ Air-powered interface lets players control their shots.
- ▶ Backboard with hoop and game clock moves up and down.
- ▶ Two player stations.
- ▶ Supports competitive or single-player modes.
- ▶ Fast 40-second game time keeps turns moving.
- ▶ Double-time bonus scoring spikes excitement in final stretch.
- ▶ Dynamic lighting, scoreboards and sounds pull in players.
- ▶ Durable electro-mechanical build supports heavy public play.
- ▶ Ideal anchor for sports-themed zones and redemption areas.

## SPECS (dims / wt / usage)

32" W. x 38" D. x 98" H. (79" H. w/o marquee)  
480 lbs. / shipping: 680 lbs. / 300W (2.8A)



Information? Email [SALES@ANDAMIROUSA.COM](mailto:SALES@ANDAMIROUSA.COM)

# BOBBLEHEAD BASEBALL VS

## STREET OR ARCADE

### FEATURES

- ▶ Have fun with quirky bobble-headed avatars of Major League Baseball's biggest stars.
- ▶ Onboard program switching between non-ticket and ticket operations.
- ▶ Two-player mode: engage in head-to-head pitching, batting and base running action.
- ▶ One-player mode: select role of pitcher or batter to customize experience.
- ▶ Operator-adjustable difficulty settings.
- ▶ Pitch fastballs, curves and changeups.
- ▶ Batter aims for single, double, triple and home run targets – while avoiding outs.
- ▶ Mystery targets add element of surprise.
- ▶ Competitive pricing ensures faster ROI for street operators.

### SPECS (dims / wt / usage)

36" W. x 42" D. x 95" H. (78" H. w/o marquee)

LCD size: 43" vertical

320 lbs. / shipping: 353 lbs.

210W (1.4A)

Free-volt: 110v~230v



© 2022 MLB PLAYERS, INC. ALL RIGHTS RESERVED



Information? Email [SALES@ANDAMIROUSA.COM](mailto:SALES@ANDAMIROUSA.COM)

# CRAZY TOY 31

## STANDARD 31" WIDE CRANE MACHINES

### FEATURES

- ▶ Robust all-metal construction.
- ▶ Tempered-safety glass.
- ▶ Eye-catching LED illumination.
- ▶ Skill-based or win-every-time settings.
- ▶ 4" to 9" prize accommodation.
- ▶ Rare shelving amplifies prize ambiance.
- ▶ Optical prize detection.
- ▶ Competitively priced.
- ▶ Perfectly sized for any location.
- ▶ Available in two stylings: (1) Standard [with full edge] and (2) Clear [without edge].



OPTIONAL MODEL  
WITH TRANSPARENT  
FRONT CORNERS.

### SPECIFICATIONS (dims / wt / usage)

31" W. x 35" D. x 79" H.

254 lbs. / Shipping: 260 lbs.

300W (2.5A)

# CRAZY TOY JR

## JUNIOR CRANE MACHINE FORMAT

### FEATURES

- ▶ JR joins Andamiro's 31" Crazy Toy crane lineup.
- ▶ Compact footprint with 28" width.
- ▶ Budget friendly, exceptional value.
- ▶ Holds plush, keychains, candy, ducks, and a variety of small novelties and toys.
- ▶ Ships with 140mm claw.
- ▶ Eye-catching LED illumination to attract players.
- ▶ Built with all-metal materials and tempered safety glass for longevity.
- ▶ Skill-based settings, winner-every-time mode, and optical prize detection.
- ▶ Rear shelving to showcase prizes, adding boutique-style appeal.

### SPECIFICATIONS (dims / wt / usage)

28" W. x 34" D. x 68" H. / 250 lbs. / 250W



← PRIZE  
SHOWCASE  
SHELVES

# DRAGONS (SHIPS SEPTEMBER)

'PUSHINKO' PLAY SET IN THE WORLD OF 'HOW TO TRAIN YOUR DRAGON'



LIMITED  
SUMMER  
RELEASE

## FEATURES

- ▶ Legendary DreamWorks™ characters.
- ▶ Innovative pachinko-style upper deck.
- ▶ Ball pusher lower deck.
- ▶ Standout 2-player cabinet.
- ▶ Dragon Chance center-mount mini-game.
- ▶ Explosive cascading bonus events.
- ▶ Bold, theatrical cabinet visuals.
- ▶ 13 collectible game cards.

## SPECS (dims / wt / usage)

81" W. x 57" D. x 97" H.  
1,212 lbs. / 530W (2.8A)



DreamWorks Dragons™ © 2026 DreamWorks Animation LLC.

# KRAZY BALLZ

## COLORFUL, HIGH-ENERGY CENTERPIECE

### FEATURES

- ▶ 4-player competitive arcade game.
- ▶ Vibrant red, green, blue, and yellow zones.
- ▶ Objective: collect matching colored balls in designated zones.
- ▶ Radial wind simulation dome with centrifugal energy creates chaotic ball motion.
- ▶ First player to gather four matching balls wins; eject opposing balls to stay ahead.
- ▶ Gameplay emphasizes quick thinking, strategy, and agility.
- ▶ 75x75-in. footprint (39 sq.ft.) is ideal for multiplayer redemption setups.
- ▶ Appeals to a wide audience as an engaging, long-lasting group attraction.

### SPECS (dims / wt / usage)

75" W. x 75" D. x 94" H.

882 lbs.

650W (5.8A) [max. 850W] / 4.7A [6A]



# MARKSMAN

## 2-PLAYER FIRST-PERSON SHOOTING SIMULATOR

### FEATURES

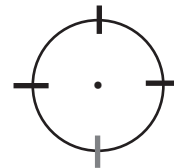
- ▶ Air-powered gun system.
- ▶ Force-feedback realism.
- ▶ 11 missions in themed categories.
- ▶ Hostage rescue and zombie games, plus classic gallery contests.
- ▶ Gun simulates pistol, shotgun and submachine.
- ▶ Smooth cable retraction keeps weapons secured between plays.
- ▶ Dual 65" monitors deliver a 130" hi-def visual display.
- ▶ Supports solo and two-player competitive modes.
- ▶ Field-tested reliability backed by Andamiro warranties (1 year on electronics and 6 months on guns).

### SPECS (dims / wt / usage)

74" W. x 86" D. x 100" H.  
816 lbs. / max. 1430W



© 2025 Super Win.



# NICKELODEON KART RACERS

## CONTEMPORARY DRIVING SIMULATION

Brings the beloved Nickelodeon racing franchise to arcades with fast-paced competition, full-motion controls, and the wild, unpredictable fun of Nicktoons mayhem.

## FEATURES

- ▶ Streamlined roster and menus.
- ▶ Supports linked cabinets.
- ▶ Adjustable force-feedback steering.
- ▶ Gas and brake pedals with combo moves.
- ▶ 24 characters from across the Nick universe.
- ▶ Each character paired with a distinct kart and performance profile.
- ▶ 12 themed racecourses from Nicktoons worlds.
- ▶ Skill and item buttons add tactical boosts and opponent attacks.
- ▶ In-game slime acts as an oil-slick hazard and visual obstruction.
- ▶ Mini map displays track layout.
- ▶ USB-based update support for operators.



## SPECS (dims / wt / usage)

41" W. x 70" D. x 94" H. / 580 lbs. / max. 460W  
Monitor: 43"

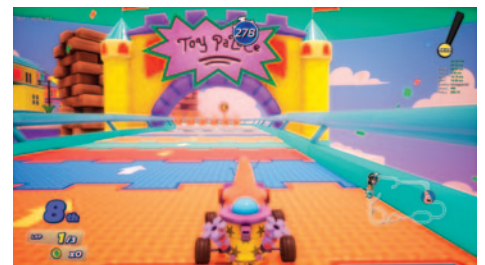


## TRIALS

March- April

## AVAILABILITY

Q2 2026



Developed by Andamiro. Programming by Team Infinity.  
Based on *Nickelodeon Kart Racers: Slime Speedway* © GameMill/Bamtag.  
© 2025 Viacom International Inc. All Rights Reserved.

# REDEEM MACHINE 2

## NEXT-GEN SELF-SERVICE KIOSK (V2 ) REDEEMS IN-GAME COLLECTIBLE CARDS & COLOR CHIPS

### FEATURES

- ▶ Sleek, modern design with integrated display, professional black accents and color-changing LEDs.
- ▶ Rugged construction with all-steel internal framework.
- ▶ Validates and redeems barcoded and RFID cards.
- ▶ Configurable for custom product types with reward tiers: *Normal, Special and Super Bonus*.
- ▶ Recognizes and awards completed bonus sets.
- ▶ Compatible with industry-standard swipe card systems.
- ▶ USB or email export of redemption activity, with CSV-formatted bookkeeping files.
- ▶ Software, product updates supported via USB or internet.
- ▶ Dual-screen layout with a 27" touchscreen (lower) and 23.8" video monitor (top).
- ▶ Dual ticket dispensers (optional) serve traditional paper-ticket venues.

### SPECS (dims / wt / usage)

33" W. x 28" D. x 85" H. (65" H. without marquee)  
287 lbs. / max. 180W



# SPIDER-MAN COIN PUSHER 2P

## COIN PUSHER WITHOUT CARDS

### FEATURES

- ▶ Officially licensed two-player coin pusher game featuring Spider-Man.
- ▶ Eye-catching cabinet themed around the Spider-Man universe.
- ▶ Gameplay focuses on precise coin launching at illuminated targets.
- ▶ Coins advance on the pusher platform with Spider-Man-themed blue and red spheres.
- ▶ Players test timing skills, triggering action sequences with each shot.
- ▶ Auto-rotating coin-firing mechanism evokes Spider-Man's web-shooting.
- ▶ No dispensable ticket items like character cards or chips. Operates with three self-contained in-game pieces:
  1. Tokens – 1,000 per side;
  2. Red balls (55mm.) – 13 per side;
  3. Blue balls (30mm.) – 55 per side.

### SPECS (dims / wt / usage)

70" W. x 46" D. x 106" H.

1,090 lbs. / Shipping: 1,200 lbs.

700W (5.8A)

Free-volt 110v~230v



© 2023 MARVEL Studios

# SPIDER-MAN COIN PUSHER 1P

## ONE-PLAYER PUSHER WITHOUT CARDS

### FEATURES

- ▶ Single cabinet form factor: fits diverse arcade spaces and budgets.
- ▶ Auto-rotating coin-firing mechanism: Emulates Spider-Man's web-shooting gesture to fire rapid coin shots
- ▶ Rapid auto-shot event: up to 45 coins are re-released in a 15-second interval, with adjustable settings allowing for 30 to 90 bonus shots
- ▶ Big Ball drop armature: swivels left to drop Spider-Man's red balls onto the playfield, triggering the Big Ball game.
- ▶ Expanded Big Ball game: updated prize layout includes seven target holes, featuring six ticket value prizes and one for the super bonus.

### SPECS (dims / wt / usage)

41" W. x 48" D. x 93" H. / 760 lbs. / 240W

© 2024 MARVEL Studios



Information? Email [SALES@ANDAMIROUSA.COM](mailto:SALES@ANDAMIROUSA.COM)

# SPONGEBOB PIRATES OF BIKINI BOTTOM

## CARD+CHIP+VIDEO+BALL

### FEATURES

- ▶ Feature-filled pusher operates with miniature blue balls instead of tokens.
- ▶ Character cards and chips mingle with balls.
- ▶ Chips are RFID tagged and the cabinet is equipped with two validators that redeem them.
- ▶ Combines electrotechnical with video.
- ▶ Easy and fun for all ages.
- ▶ Attractive 2-player cabinet.
- ▶ Fire balls into moving treasure chest.
- ▶ Spinning video wheel game awards tickets, cards, chips or the Big Win.

### SPECS (dims / wt / usage)

70" W. x 47" D. x 101" H.

937 lbs. / Shipping: 1,240 lbs.

700W (5.8A)

Free-volt 110v~230v

© 2022 Viacom International Inc. All rights reserved.

### IN-GAME CARDS

- ▶ 9 Bikini Bottom characters.
- ▶ Pirate riddles adorn backsides.
- ▶ 9-card set wins Super Bonus.



And our SpongeBob Pirates cards are...



# SPONGEBOB SWISH

**NEW**

## FAMILY-FRIENDLY, SKILL-SHOT BASKETBALL

### FEATURES

- ▶ Aim & shoot: use the joystick and button – easy to play, challenging to master.
- ▶ Laterally moving backboard with three rim targets.
- ▶ Sink shots to score and climb the scoreboard vertical from 2 to 10.
- ▶ Fast-paced rounds keep players engaged and coming back.
- ▶ Reach top to trigger reel spin for a chance at BIG BONUS tickets.
- ▶ Great for competitive play...who can reach the bonus spin first?
- ▶ Gravity-fed operation for smooth, reliable cycles.
- ▶ Ticket awards scale with performance – the better one shoots, the more they win!
- ▶ Bright LEDs and bold Nickelodeon branding.
- ▶ SpongeBob and Patrick character sides.
- ▶ Fits tight floor plans — still demands attention.

### SPECS (dims / wt / usage)

50" W. x 44" D. x 96" H. (71" w/o marquee)

530 lbs. / 300W (2.5A)

© 2025 Viacom International Inc. All Rights Reserved.



Information? Email [SALES@ANDAMIROUSA.COM](mailto:SALES@ANDAMIROUSA.COM)

# SPONGEBOB VR BUBBLE COASTER

## UNATTENDED VR SIMULATOR

Player-operated VR attraction is sold and licensed by Andamiro and made by virtual reality leader Rilix LLC.

## FEATURES

- ▶ Exciting unattended (player-operated) VR attraction from Andamiro USA and virtual reality leader Rilix.
- ▶ Includes four scenic rides that immerse guests in a unique Bikini Bottom adventure.
- ▶ Affordable unattended virtual reality entertainment.
- ▶ Features world-famous Nickelodeon characters.
- ▶ Multigenerational appeal.
- ▶ Built on the proven Rilix platform, known for reliability and immersive experience.
- ▶ Vibrant cabinet with HD headgear.
- ▶ Wind and shaker haptics for added realism.
- ▶ Seats two guests for shared adventures.
- ▶ Comes with a complimentary spare VR head-set for minimal downtime.
- ▶ Easy-to-maintain system, designed to maximize operator ROI.
- ▶ Compact footprint is ideal for arcades, FECs and high-traffic public locations.

## SPECS (dims / wt / usage)

48" W. x 72" D. x 105" H.

250 lbs. / Shipping: 473 lbs.

796W (6.8A)



© 2023 Viacom International, Inc. All rights reserved.

POWERED BY:



rilix.business

SOLD BY:



andamirousa.com

# GHOST COASTER UPDATE

## BUBBLE COASTER EXPANSION EPISODE

SpongeBob VR Bubble Coaster, sold and licensed by Andamiro and made by Rilix LLC.

## FEATURES

- ▶ A new scenic adventure.
- ▶ Stars the Flying Dutchman haunted ship.
- ▶ Ghostly nighttime scenes with glowing ship effects.
- ▶ Hand-gesture recognition for ride interaction.
- ▶ Family friendly.
- ▶ Joins original fan-favorites: “Plankton Robot,” “Goo Lagoon” and “Krusty Krab.”
- ▶ Purchasable upgrade for existing units.
- ▶ Included with the purchase of new Bubble Coasters effective Nov. 18, 2024.

## DEPLOYMENT

Deployment for expansion set will function similarly to the video gaming industry’s DLC (downloadable content) technique but requires Rilix to initiate contact with the machine owner to begin the update process, making it a personalized digital distribution method.

## SKU

GSTR0AMM001

© 2024 Viacom International, Inc. All rights reserved.



Information? Email [SALES@ANDAMIROUSA.COM](mailto:SALES@ANDAMIROUSA.COM)

# STAR WARS COIN PUSHER

## UNLOCK A GALACTIC FANBASE

### FEATURES

- ▶ Licensed game developed in partnership with Lucasfilm and Disney.
- ▶ Two-station pusher game with iconic Star Wars themes.
- ▶ Rotating target wheel for ticket, tokens and card wins.
- ▶ Pinball skill shot mini game adds excitement and value.
- ▶ Win nine Star Wars character cards for Super CARD Bonus.
- ▶ Bonus and Super Spin games with big ticket rewards.
- ▶ Tilting drum display for visual appeal.

### GAMEPLAY



TARGET WHEEL



PINBALL SKILL SHOT



SUPER SPIN

BONUS SPIN



© & ™ Lucasfilm Ltd.



### IN-GAME CARDS

- ▶ Nine legendary Star Wars characters.
- ▶ Portrayed in authentic, cinematic style.

### SPECS (dims / wt / usage)

77" W. x 43" D. x 95" H.

1,090 lbs. / 700W (5.8A)

# SUPERSTAR 2

## SKILL-BASED PRIZE VENDER

### FEATURES

- ▶ Prize merchandiser blends proven features with a new look
- ▶ Rugged all-steel, white cabinet decked in Ticket Man™ hero graphics.
- ▶ 7 spacious shelves (10" W. x 7" D.) display a wide variety of prizes.
- ▶ Highly secure interior design deters theft for peace of mind.
- ▶ Ships with Ticket-Man™ ticket boxes for easy integration into redemption venues.
- ▶ Simple one-button control and skill play.
- ▶ Players aim for a number and release!

### SPECS (dims / wt / usage)

40" W. x 37" D. x 89" H. (76" H. w/o marquee)

618 lbs. / shipping: 690 lbs.

200W (2.2A)

Free-volt 110v~230v



9.125" W. x 4" D. x 4.375" H. ticket boxes  
(assembly required)



SuperStar 2 supports optional AM.KIT remote monitoring app for real-time management, available for both iOS and Android. Speak to your Andamiro representative for details.

ENJOY REAL-TIME CONVENIENCE!



# TIC TAC TOE BASKETBALL CHALLENGE

## LOW-COST, HIGH STRATEGY

### FEATURES

- ▶ Combines classic Tic Tac Toe with basketball in an arcade attraction.
- ▶ Suitable for all ages
- ▶ Two-player and solo modes.
- ▶ Players sink balls into a 3x3 grid to form a line of three Xs or Os to win.
- ▶ Three play styles (operator programable): fixed, cancel and steal, for customized gameplay.
- ▶ Complements Tic Shaq Toe Basketball featuring Shaquille O'Neal.
- ▶ Diverse appeal and strong ROI for operators.



### SPECS (dims / wt / usage)

42" W. x 110" D. x 108" H.

904 lbs. / shipping: 1,025

230W (2.3A)

Information? Email [SALES@ANDAMIROUSA.COM](mailto:SALES@ANDAMIROUSA.COM)

# TICKET COASTERS

## GUARDIANS OF THE GALAXY



© 2023 MARVEL Studios

## SPONGEBOB TICKET COASTER



© 2021 Viacom International Inc.

### FEATURES (applying to both models)

- ▶ Eye-catching island cabinet with two player stations; ideal centerpiece attraction.
- ▶ Engaging gravity-based gameplay suitable for all ages.
- ▶ Players launch a ball into helix launcher, sending it onto a track for a thrilling ride.
- ▶ Objective: time the landing to drop the ball into one of the roller coaster cars.
- ▶ Nine train cars correspond to nine ticket

values; players win tickets based on where the ball lands.

- ▶ Super bonus awarded when players light up all nine ticket values.
- ▶ Proven earner in redemption venues.
- ▶ Wrapped in popular GOTG and SpongeBob graphics and sound packages.
- ▶ GOTG features 3D holographic fans and LCDs on each player side.

### GOTG SPECS (dims / wt / usage)

71" W. x 45" D. x 107" H.  
981 lbs. / shipping: 1,058 lbs.  
520W (450W max.) [4.3A]

### SPONGEBOB SPECS (dims / wt / usage)

71" W. x 55" D. x 101" H.  
952 lbs. / shipping: 1,100 lbs.  
330W (450W max.) [2.6A-3A]

# WACKY RACER

## WHACKING ACTION WITH A RACING TWIST

### FEATURES

- ▶ Combines classic mallet arcade gameplay with head-to-head hammer-powered racing.
- ▶ Two-player competitive mode and single-player challenge game options.
- ▶ Features popular Nickelodeon characters SpongeBob SquarePants and Patrick Star.
- ▶ Players strike popping tire targets to advance characters along vertical racetracks.
- ▶ Points awarded for each hit; big reward for reaching the finish line.
- ▶ Gold victory cup lights up to celebrate the winner.
- ▶ Mechanically reliable popping targets.

### SPECS (dims / wt / usage)

54" W. x 40" D. x 97" H.

314 lbs. / shipping: 550 lbs.

700W standby power (2,000W max. operating power)

© 2024 Viacom International, Inc. All rights reserved.



Information? Email [SALES@ANDAMIROUSA.COM](mailto:SALES@ANDAMIROUSA.COM)

# PUMP IT UP w/ PHOENIX SOFTWARE



© 2024 Andamiro Co. Ltd.

## PHOENIX SOFTWARE

- ▶ All-new Premium Mode for greater challenges and opportunities to unlock six exclusive songs.
- ▶ Added features and simpler interface for novices.
- ▶ Increased scoring range based on a one-million points system
- ▶ New plates.
- ▶ 100 score grades with a perfect SSS+ at the top.
- ▶ Improved structuring of 150+ player reward labels.
- ▶ More than 500 songs including 150 updated titles.
- ▶ Routine content updates – FREE!



[mall.piugame.com](http://mall.piugame.com)

## PHOENIX UPGRADES

UPGRADE KIT 1: SSD *without* main box\*

UPGRADE KIT 2: SSD *with* main box (MK9 computer)\*

\*Compatible cabinet versions:

LX (55"), CX (43"), TX (55") and FX (42")

Also included: 20 AM.PASS cards (10 in MK9 kit), SSD lock and marquee.

Questions @ upgrading? Please email Andamiro USA's support departments at [service@andamirousa.com](mailto:service@andamirousa.com) or [parts@andamirousa.com](mailto:parts@andamirousa.com), or call us at (310) 767-5800 and enter 2 for service or 3 for parts. When contacting us about PIU upgrades, please provide the serial number of the game you wish to update.

## PUMP IT UP LX-55 CABINET

- ▶ Large 55" high-definition display.
- ▶ 2 side-by-side 5-step stages.
- ▶ Wall of sound: 4 speakers / 2 subwoofers.
- ▶ Brilliant lighting effects.
- ▶ AM.PASS RFID card readers.



Available in original white and limited-edition black cabinets.

## SPECS (dims / wt / usage)

66" W. x 80" D. x 94" H.

1,100 lbs.

650W (6A)

### SHIPPING (2 PALLETS / 1,530 lbs.):

1. Main body: 69" W. x 45" D. x 84" H. / 1180 lbs.

2. Step platform: 40" W. x 48" D. x 20" H. / 350 lbs.

# WARRANTY



## **ANDAMIRO WARRANTY POLICY**



Andamiro warrants to the original purchaser that all of its products will be free from defects in material and workmanship.

**Andamiro warrants the parts from date of shipment as follows.**

- **One Year Limited Warranty : Electronic Boards**
- **6 Months Limited Warranty : Moving Parts**

For any key components within the warranty period, Andamiro will repair or replace defective components free of charge.

When placing a warranty request, the customer is requested to furnish the following information:

1. Name of the game.
2. Serial Number of the game.
3. A Detailed Description of the defect/s experienced.

This warranty does not apply to the defects caused due to misuse or abuse of the product.

Any alterations made to game or game parts will void this warranty.

For warranty details on our product range please visit our website, [www.andamiro.com](http://www.andamiro.com).

ANDAMIRO CO., LTD.  
[www.andamiro.com](http://www.andamiro.com)

