

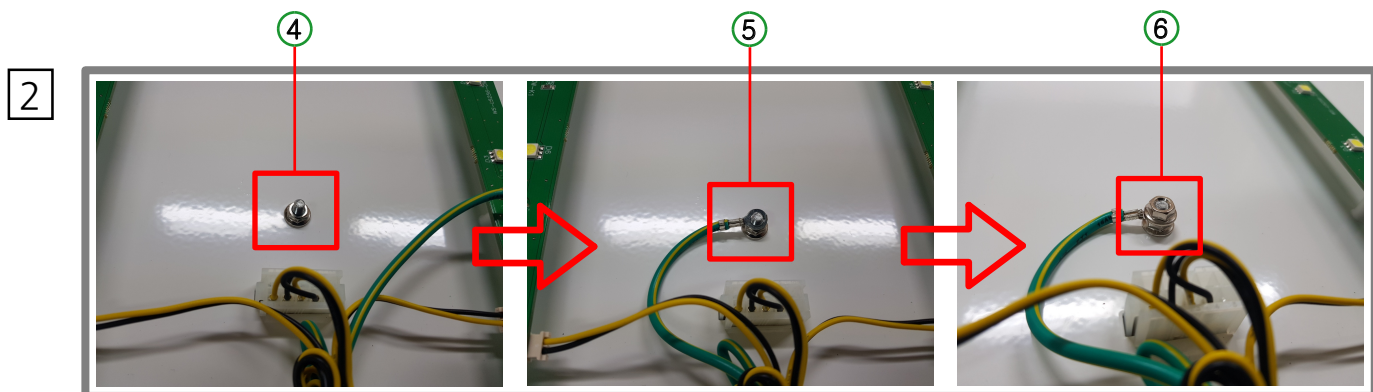
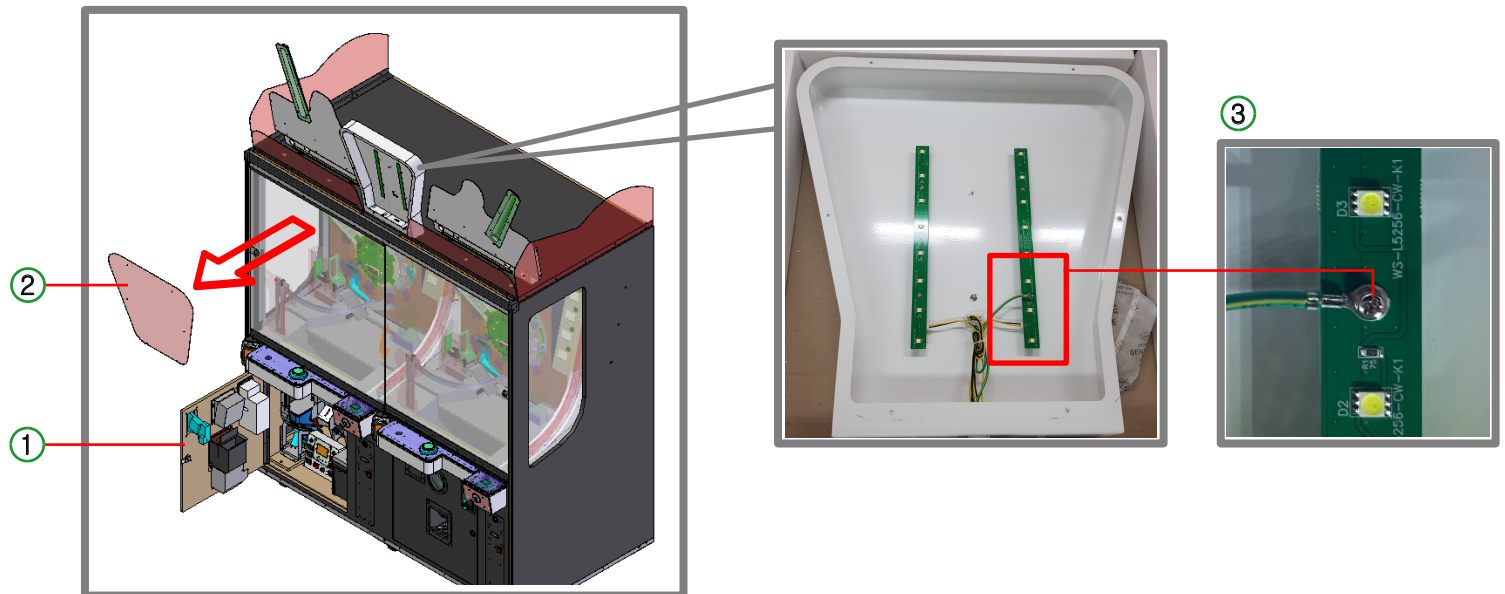
[STAR WARS PUSHER - HOW TO REWORK FG]

* ACCESSORIES

PART NAME	Q'TY
M4 NUT	2EA

- 1 ① Turn off the power using the AC INPUT S/W by displaying the front left door [7001KEY].
- ② Remove the acrylic cover of the BILLBOARD SB FND BOX ASS'Y. [M4 bolts, 6 locations]
- After separation, ③ separate the FG line shown in the photo. [M3 bolt, 1 piece]

*** After disconnecting the FG line, reattach the separated bolts in place.**



Assemble in the following order :

- ④ Fasten the nut to the STUD BOLT below -> ⑤ F.G line -> ⑥ Fasten the nut.

- 3 Complete the assembly as shown below.
- * Afterwards, please assemble the acrylic in the reverse order of disassembly.**

